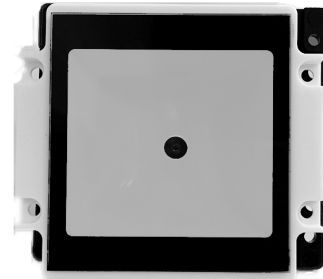


# 嵌入式二维识读终端

Embedded 2dimensional reading terminal

# SP200



## 应用场景 / Application Scenarios

该嵌入式二维识读终端可扫描各类二维码, 广泛适用于如自助终端票证、物流、金融、交通运输、医疗卫生等领域, 满足各类用户快速识读的业务要求。

Embedded dimensional reading terminal can scan all types of two-dimensional code. It is widely used in fields such as self-service terminals and tickets, logistics, finance, transportation, Medical & health care and other fields to meet all types of users to read business requirements fast.



## 性能参数 / Performance Parameters

### ■ 识读参数 / Reading Parameters

识读模式 / Reading mode	CMOS	
分辨率 / Resolution Ratio	640x480 pixels	
识读码制 / Symbolologies	二维码 / Two-Dimensional Code	GM, MICRO QR, MICRO PDF417, QR Code, Data Matrix, Chinese-Sensible Code, etc.
	一维码 / One-Dimensional Code	Code 128, EAN-13, EAN-8, Code39, Code93, UPC-A, etc.
识读精度 / Precision	≥10mil	
识读景深 / Reading Depth	0mm~100mm	
打印对比度 / Print Contrast	≥30%	
条码旋转灵敏度 / Barcode Rotation Sensitivity	360°@ 0° Pitch and 0° Skew	
条码倾斜灵敏度 / Barcode Tilt Sensitivity	±30°@ 0° Roll and 0° Pitch	
条码偏转灵敏度 / Barcode Deflection Sensitivity	±30°@ 0° Roll and 0° Skew	
环境光照度 / Ambient Light	0 ~ 100,000 LUX	
照明LED光源 / Illumination LED light source	可见发光二极管 (白色) / Visible Light-emitting Diode (white )	
指示LED光源 / Indicator LED lights source	无/No	
接口 / Interface	USB虚拟串口 / USB HID / RS232串口 / USB Virtual COM Port / USB HID / RS232	
触发方式 / Triggering Mode	手动 / 自动 / Manual / Automatic	
提示方式 / Prompting Mode	蜂鸣器 / Buzzers	
设置方式 / Setting Mode	电脑在线设置 / 读码设置 / Set by Computer online / Reading Code	

### ■ 电气特性 / Electrical Characteristics

输入电压 / Input Voltage	3~5.5V	
电流 / Current	最大电流 / Maximum Current	240mA
	工作电流 / Operating Current	200mA
	待机电流 / Standby Current	30mA
功耗 / Power Consumption	最大功耗 / Maximum Power Consumption	1.2W
	工作功耗 / Operating Power	1W
	待机功耗 / Standby Power Consumption	0.35W

### ■ 工作环境 / Working Environment

工作温度 / Working Temperature	-20°C~+60°C
储存温度 / Storage Temperature	-40°C~+80°C
工作湿度 / Working Humidity	5% - 95% (无凝结) / 5% - 95%(No condensation)

### ■ 物理参数 / Physical Parameters

模组尺寸 / Module size	66mm×59mm×33mm
固定孔位 / Mounting holes	43mm x 57mm
线缆长度 / Cable length	2米 / 2Meters
重量 / Weight	100g
安全等级 / Safety Grade	EMC电磁兼容性: EN55022, EN55024 / EMC: EN55022, EN55024
	电气安全: EN60950-1 / Electrical Safety: EN60950-1
	光照安全: EN62471: 2008 / Light Safety: EN62471: 2008
	防水防尘密封等级: IP00 terproof & Dustproof Sealing Rating: IP00

(产品以实物为准, 配置如有变更, 恕不另行通知) / (The Product is subject to real object, configuration changes will have no other notice.)